



Erasmus+

# OLS platformas izmantošana

**Prezentāciju veidoja:  
Zane Jugbārde  
Projektu vadītāja**



Explore by topic ▾

What do you want to learn today?



Log in | En ▾

## Learn a New Language



5279 members

Hosted by



### Community description

This is where your language learning journey begins with the Online Language Support (OLS). To get started, click on the yellow button to the right and select the language you want to learn on the next page. Choose any of the available languages in order to improve your linguistic skills.

### Target audience

Erasmus+ and European Solidarity Corps participants

### Objectives

Embark on your online language learning journey with OLS!

### Offered by

This content is offered by the European Commission. The European Commission is the European Union's politically independent executive arm. It is also responsible for drawing up proposals for new

### Tags

**Lai pieslēgtos sistēmai - jāiet uz sadaļu LOG IN vai JOIN COMMUNITY. Pieslēdzas sistēmai jau ar esošo loginu vai izveido jaunu**



Sadaļā  
"What do you  
want to learn  
today?"  
Ieraksta  
ENGLISH  
un nospiež  
ENTER

## Learn a New Language



5105 members

Hosted by

### Community description

This is where your language learning journey begins with the Online Language Support (OLS). To get started, click on the yellow button to the right and select the language you want to learn on the next page. Choose any of the available languages in order to improve your linguistic skills.

### Target audience

Erasmus+ and European Solidarity Corps participants

### Objectives

Embark on your online language learning journey with OLS!

### Offered by

This content is offered by the European Commission. The European Commission is the European Union's politically independent executive arm. It is alone responsible for drawing up proposals for new European legislation, and it implements the decisions of the European Parliament and the Council of the European Union.



### Tags

9 results found

Topic ▾

Level ▾

Language ▾

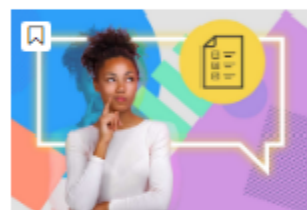
Duration ▾

Type ▾

Curriculum ▾

Provider ▾

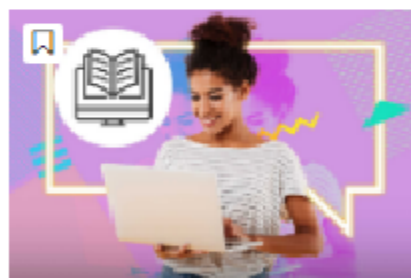
sort by ▾



education & capacity building

English

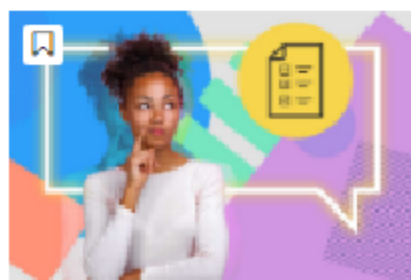
★★★★★ 0 (0)



education & capacity building

My English Course B1

★★★★★ 5 (2)



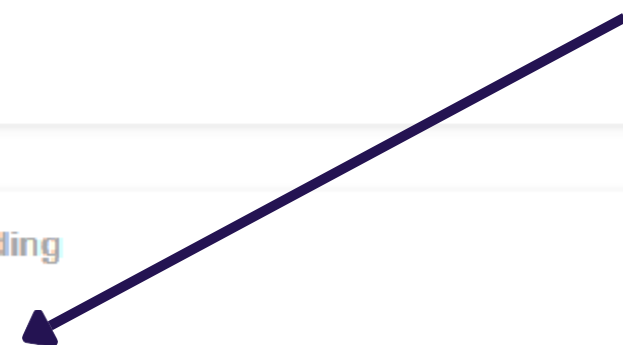
education & capacity building

English Placement Test

★★★★★ 4.8 (16)

Resume

Parādīsies šāda lapa un jātin  
tik tālu līdz parādīsies  
English Placement Test,  
tālāk dodas šajā sadaļā



# English Placement Test

🕒 Less than an hour

📊 Novice

Start assessment



## Assessment details

Knowing your language level is a great starting point to reach your learning goals faster! Take a few minutes to complete the placement test below and let us recommend the course that suits you best.

## Target audience

Erasmus+European Solidarity Corps

## Offered by

This content is offered by the European Commission. The European Commission is the European Union's politically independent executive arm. It is alone responsible for drawing up proposals for new European legislation, and it implements the decisions of the European Parliament and the Council of the European Union.

## Tags

Nākamajā sadaļā būs šī lapa un jāspiež Start assesment

Start your English Placement Test now!

Mark as done



The test takes between **10 - 45 minutes** depending on your level.

During the placement test, you can end the test at any time and your results will be taken into account.

To end the test, simply click the **"Finish attempt"** button.



55 questions

Grading method: Highest grade

Summary of your previous attempts

Attempt	State	Review
1	Finished Submitted Wednesday, 13 July 2022, 1:21 PM	Review

2

In progress

Continue the last attempt

Šeit sāksies tests, kopumā būs 55 jautājumu, kas ietver gan lasīšanu, gramatiku un klausīšanos. Lai sāktu testu jāspiež uz **Start TEST** (attēlā gan rādās savādāk jau jau ir tests pirmo reizi aizpildīts)





Question 1

Not yet  
answered

Marked out of  
1.00

🚩 Flag question

"I \_\_\_\_\_ 40 years old."

Select one:

- ☐ am
- ☐ is
- ☐ have
- ☐ has

Question 2

Not yet  
answered

Marked out of  
1.00

🚩 Flag question

"He \_\_\_\_\_ play tennis."

Select one:

- ☐ not
- ☐ don't
- ☐ doesn't
- ☐ never

Question 3

Not yet  
answered

Marked out of  
1.00

🚩 Flag question

"Where does she work?"

"She works \_\_\_\_\_ Luxembourg."

Select one:

- ☐ to
- ☐ on

Quiz Navigation

1	2	3	4	5	6	7	8	9
10	11	12	13	14	15	16	17	18
19	20	21	22	23	24	25	26	27
28	29	30	31	32	33	34	35	36
37	38	39	40	41	42	43	44	45
46	47	48	49	50	51	52	53	54
55								

Finish attempt ...

Tests būs šāds, katrā  
lapa apmēram 10  
jautājumi.  
Lūgums beigās savus  
rezultātus atsūtīt uz e-  
pastu -  
[steh.euprojects@gmail.com](mailto:steh.euprojects@gmail.com)  
Gan pirmo valodas testu  
pirms došanās ārzemju  
praksē, gan otru valodas  
testu atgriežoties no  
prakses.



# Paldies!

# Lai izdodas

# iegūt labus

# rezultātus



## Erasmus+



**Ja ir jautājumi, droši sazinies ar projektu vadītāju**  
**Līgu Krūmiņu Whatsapp: 26555539**  
**vai raksti [steh.euprojects@gmail.com](mailto:steh.euprojects@gmail.com)**